

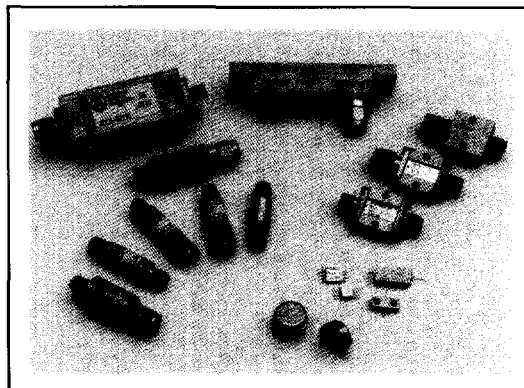
PIN DIODE FEEDBACK LIMITERS

Feedback limiters are designed to have lower threshold and leakage levels than those of conventional limiters in order to protect more sensitive components. They have input pin diode limiters, which are driven by one or more schottky detector diodes. Most circuits include DC blocks, which are required for proper operation.

In some very low frequency models it is not possible to include DC blocks. The application must be such that no low impedance DC path from the center conductor to ground exists outside the unit. The limiter threshold (1dB compression) is typically about +5dBm.

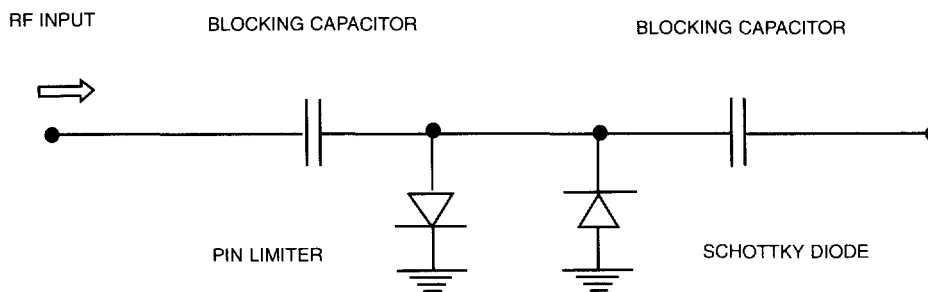
Feedback limiters will also handle peak powers above 100 watt peak (1 microsecond pulse width, .001 duty cycles, and one kilohertz repetition rate). Peak leakages are higher than the CW levels as they are with conventional limiters. This becomes more exaggerated at low frequencies (below 2 GHz).

The surface mount module (M10) is a package option below 3 GHz as are the TO8 and M22 (.532 inch long) stripline module.



- RF Input
- Blocking Capacitor
- Blocking Capacitor
- Pin Limiter
- Schottky Diode

PIN DIODE FEEDBACK SURFACE MOUNT MODULE PACKAGE



PIN DIODE FEEDBACK LIMITER ELECTRICAL SPECIFICATIONS

Model Number	Frequency Range	Peak Power (Watts)	CW Input Power (Watts)	Maximum CW Leakage (+ dbm)	Insertion Loss (dB)	VSWR	Standard Case Styles	Optional Case Styles
ACLM-4885F	20-100MHz	100	1	15.0	0.5	1.7:1	C3	M10, TO8, M22
ACLM-4769F	100-200MHz	100	1	11.0	0.5	1.7:1	TO8	C3, M10, M22
ACLM-4594F	20-500MHz	100	3	13.5	0.4	1.3:1	C3	TO8, M10, M22
ACLM-4675F	.03-1.0GHz	100	3	13.5	0.3	1.3:1	C3	TO8, M10, M22
ACLM-4786F	0.1-1.0GHz	100	2	13.5	0.3	1.3:1	C3	TO8, M10, M22
ACLM-4800F	0.1-2.0GHz	100	2	13.5	0.5	1.3:1	C3	C36, C37, M10, M22
ACLM-4650F	0.5-2.0GHz	100	2	13.5	0.5	1.4:1	C3	C36, C37, M10, M22
ACLM-4586F	1.0-2.0GHz	100	2	13.5	0.5	1.3:1	C3	C36, C37, M10, M22
ACLM-4732F	2.0-4.0GHz	100	2	13.5	0.6	1.4:1	C3	C36, C37, M22
ACLM-4700F	0.5-6.0GHz	100	2	13.5	0.8	1.5:1	C3	C36, C37, M22
ACLM-4759F	0.5-8.0GHz	100	2	13.5	0.9	1.7:1	C3	C36, C37, M22
ACLM-4504F	2.0-8.0GHz	100	2	13.0	0.8	1.5:1	C3	C36, C37, M22
ACLM-4572F	4.0-8.0GHz	100	2	13.0	1.0	1.8:1	C3	C36, C37, M22
ACLM-4727F	0.4-12.0GHz	100	2	13.0	1.5	1.8:1	C3	C36, C37, M22
ACLM-4571F	8.0-12.0GHz	100	2	13.0	1.5	1.8:1	C3	C36, C37, M22
ACLM-4618F	1.0-18.0GHz	100	2	13.0	2.4	2.4:1	C36	C3, C37, M22
ACLM-4616F	6.0-18.0GHz	100	2	13.0	2.4	2.2:1	C36	C3, C37, M22
ACLM-4797F	8.0-18.0GHz	100	2	13.0	2.4	2.2:1	C36	C3, C37, M22
ACLM-4809F	18.0-26.5GHz	100	2	15.0	2.8	2.0:1	C36	C37

3dB INTERCEPT POINT FOR FEEDBACK LIMITERS

